



Enduring Beauty

Made to Last

The Pacific's harsh environmental conditions demand building materials of the highest quality. COLORBOND® steel is proven to perform - designed and rigorously tested for close to 60 years to deliver outstanding durability, whilst being easy to maintain.

Now, we're proud to introduce the next generation with Activate™ technology - a patented high performance metallic (AM) coating system, designed to deliver enhanced corrosion resistance, delivering even longer warranties.

When combined with our unique paint formulation containing Thermatech™ solar reflectance technology, designed to reflect more of the sun's rays to help keep buildings cooler* in the summer, it's the perfect choice.

* Results will depend on the roof colour, level and location of insulation, type and location of building shape and function.

Colorbond® XRW

With our Activate™ metallic coating AM100, COLORBOND® XRW steel is a versatile and highly durable product solution, designed to perform in moderate to severe environments. Looks great and made to last, protecting your projects in both inland and coastal areas.

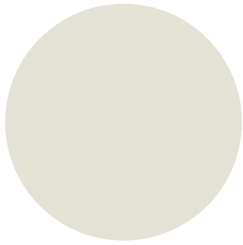
Colorbond® Ultra

Specifically designed to handle the tough environmental conditions encountered in the Pacific. With our Activate™ metallic coating AM150, COLORBOND® Ultra steel is suitable for severe marine environments, combining excellent corrosion resistance and long term durability.

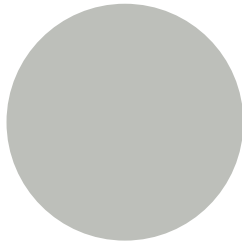
Colorbond® XMA

A select range of strong and vibrant colours developed specifically for commercial cladding applications on the XRW substrate (AM100). Due to the special nature of the colour palette, please review the warranty position which differs from the COLORBOND® core colour range.

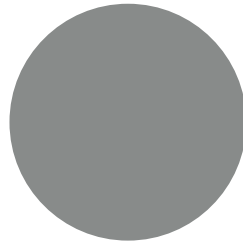
The colours shown in this brochure are as close as normal printing processes allow and should be viewed under exterior lighting conditions. To see exact COLORBOND® steel samples, please contact your local COLORBOND® steel roofing supplier. Check with your supplier for colour availability.



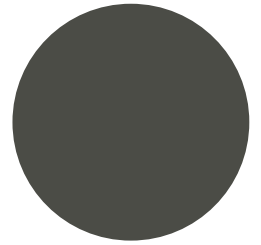
SURFMIST



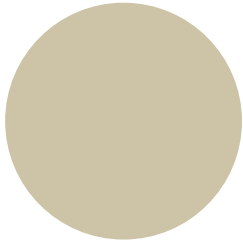
SHALE GREY



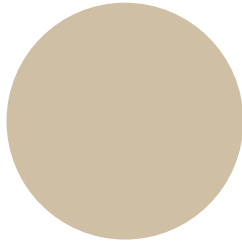
WINDSPRAY



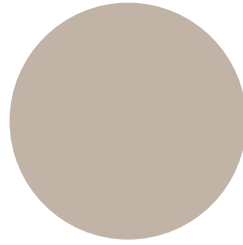
WOODLAND GREY



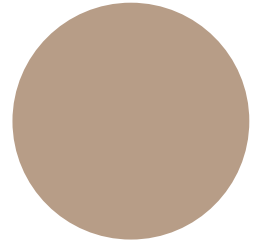
IVORIE



PAPERBARK



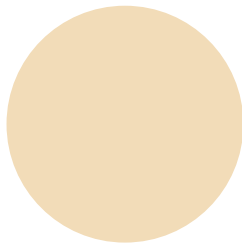
DUNE



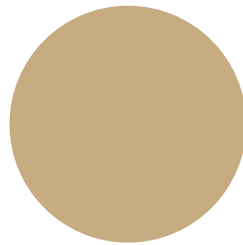
STONE



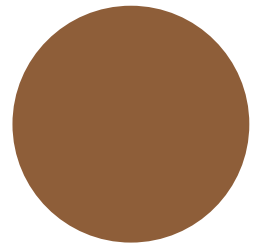
BLANC



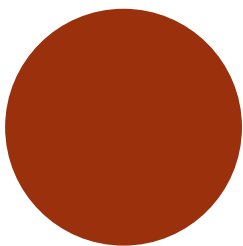
CLASSIC CREAM



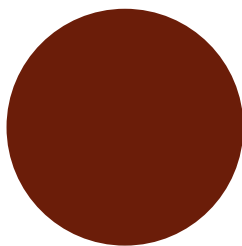
WHEAT



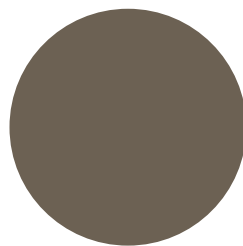
LIGHT BROWN



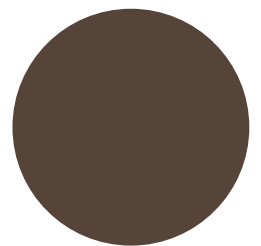
HEADLAND



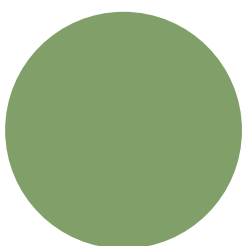
MANOR RED



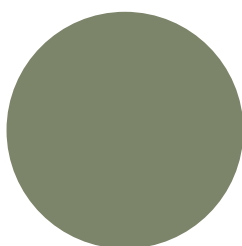
JASPER



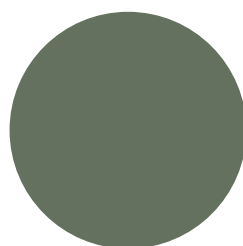
IRONBARK



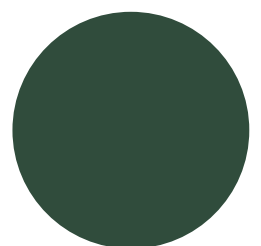
VERT CLAIR



PALE EUCALYPT



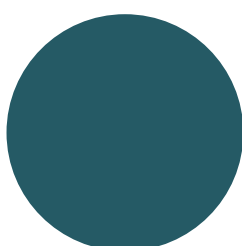
WILDERNESS



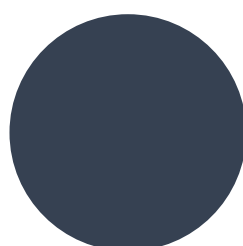
COTTAGE GREEN



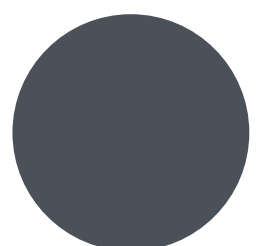
POOL BLUE



TORRES BLUE

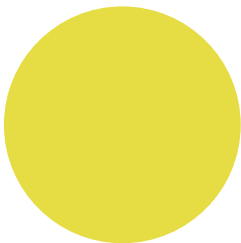


DEEP OCEAN

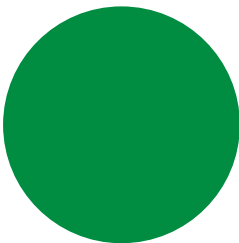


NEW DENIM BLUE

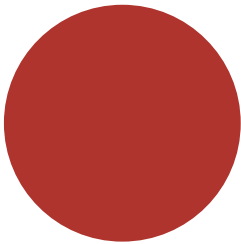
Colorbond[®] XMA



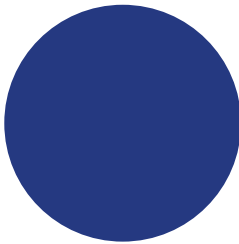
PARADISE YELLOW



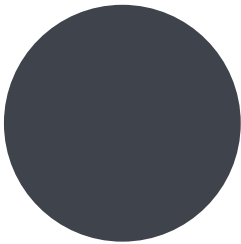
EMERALD GREEN



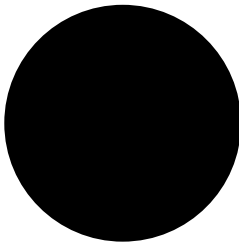
FLAME



SAPPHIRE



LAPIS BLUE



NIGHT SKY

Why choose COLORBOND[®] steel

DURABILITY

Lasting beauty. With five layers of protection, COLORBOND[®] steel has been designed to endure some of the harshest environments and provide long-lasting durability and beauty you can trust. Our high-quality steel is coated with our industry leading and patented Activate[™] technology to deliver enhanced corrosion resistance, then further enhanced with a pre-treatment, primer and a baked-on topcoat.

THERMAL COMFORT

The COLORBOND[®] steel core colour range features special Thermatech[™] solar reflectance technology to help reflect more of the sun's heat on hot sunny days, which can help keep homes cooler in the summer, improving your comfort.

Thermatech[™] technology is not available in the COLORBOND[®] XMA steel range.

WARRANTY

When you choose COLORBOND[®] steel, performance is backed by robust product warranties.



Tested in Extreme
Conditions



Fire Performance



Five Layers
of Protection



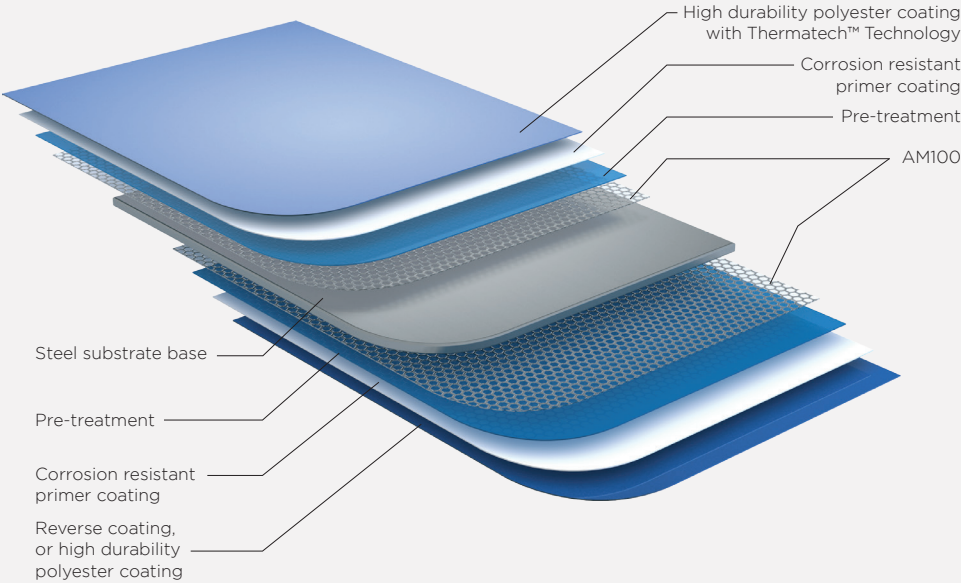
Easy to Maintain



Thermal
Efficiency



Backed by Robust
Warranties



MODERATE

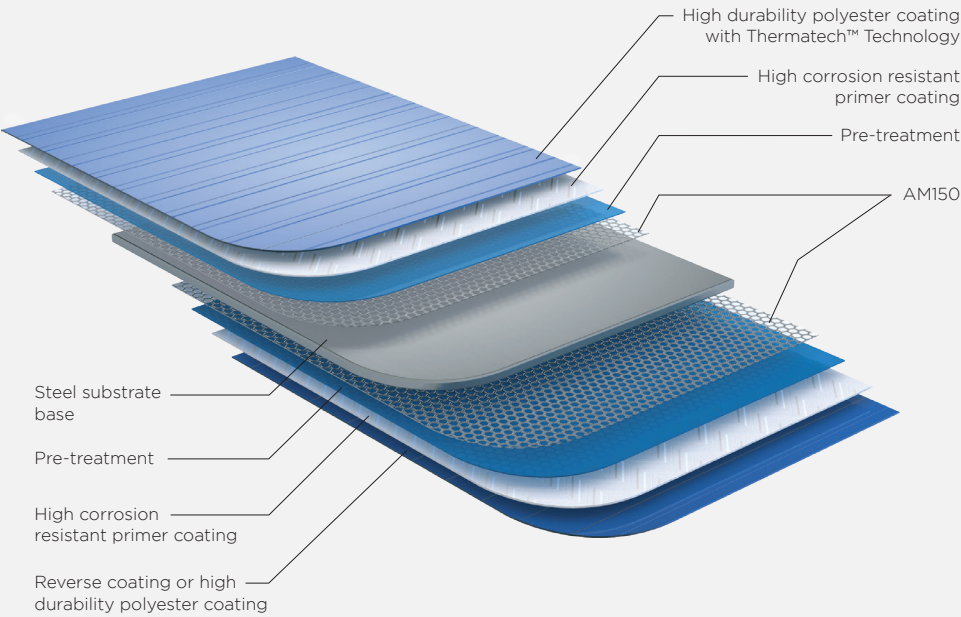
10 years: covering the paint surface against flaking & peeling.

20 years: against perforation as a result of corrosion.

SEVERE

10 years: covering the paint surface against flaking & peeling.

15 years: against perforation as a result of corrosion.



MODERATE

15 years: covering the paint surface against flaking & peeling.

25 years: against perforation as a result of corrosion.

SEVERE

15 years: covering the paint surface against flaking & peeling.

20 years: against perforation as a result of corrosion.

VERY SEVERE

10 years: covering the paint surface against flaking & peeling.

15 years: against perforation as a result of corrosion.

WARRANTY ENVIRONMENT CATEGORY DESCRIPTIONS			
MODERATE	SEVERE	VERY SEVERE	EXTREMELY SEVERE
Sheltered Coast* > 500m Exposed Coast* > 1000m	Sheltered Coast* 100-500m Exposed Coast* 500-1000m	Sheltered Coast* 25-100m Exposed Coast* 50-500m	Sheltered Coast* 0-25m Exposed Coast* 0-50m
<ul style="list-style-type: none">• Little or no salt deposit• Occasional smell of salt in the air	<ul style="list-style-type: none">• Light salt deposits• Frequent smell of salt• Near large expanses of calm salt water	<ul style="list-style-type: none">• Heavy salt deposits• Constant smell of salt spray in air• Close to breaking surf and exposed coastlines	<ul style="list-style-type: none">• Very heavy salt deposits• Immediate vicinity to breaking surf and exposed coastlines• Over calm bodies of salt water

* Sheltered Coast: Reef > 500m from shore / Inner atoll areas / Large calm lagoons and estuaries.
Exposed Coast: Surf beach / Short distance between reef and land / High strength prevailing winds.
Note: Distances are measured from high water mark.

1 COLORBOND® XRW steel is not recommended in Very Severe or Extremely Severe environments.
2 COLORBOND® ULTRA steel is not recommended in Extremely Severe environments.



For more information about COLORBOND® steel email info@colorbondpacific.com or visit colorbondpacific.com

Buyers and users of New Zealand Steel products and services must make their own assessment of the products for their own conditions. All queries regarding product specification, purpose or application should be directed to New Zealand Steel. New Zealand Steel reserves the right to modify products, techniques, equipment and statements to reflect improvements in the manufacture and application of its products. The information contained in this brochure is supplied without prejudice to New Zealand Steel's standard terms and conditions of sale. The warranty related information in this brochure is for guidance only. This brochure does not constitute the actual warranty. In the event there is conflict between this information and the standard terms and conditions, the standard terms and conditions prevail. This brochure supersedes all previous editions of COLORBOND® XRW steel and COLORBOND® ULTRA steel colour charts. COLORBOND® is a registered trademark of BlueScope Steel Limited. Thermatech™ is a trademark of BlueScope Steel Limited. Activate™ is a trademark of New Zealand Steel Limited. New Zealand Steel is a BlueScope Company. Copyright © New Zealand Steel Limited, March 2025.