



CELEBRATING 50 YEARS

1960s to 1970s

The story of New Zealand Steel is a classic pioneering one, a Kiwi tale of executing an extraordinary vision and seeing it through to a successful conclusion, whatever fortune – or misfortune – may throw in the path. And it is a history that is deeply entwined in the story of the local Franklin community.

As a commemoration of the company's official incorporation, July 26th, 1965, we will take the next four weeks to have a look at the history and to pay tribute to the local community. New Zealand Steel wouldn't be here without you, and the contribution the local region has made is something we will celebrate over the next month.

"The steelworks are a challenge of the highest order. It means a new future. a new outlook on the world."

THE FRANKLIN TIMES
27 JULY 1967

EARLY CONSTRUCTION

TOP LEFT & RIGHT: The kiln cooler supports take shape (left), 26.10.67; A newly minted mill (right), 1st August 1969 the galvanising plant prominent in white. **ABOVE:** What safety gear?! A construction worker sets about transforming the "65 acres of bare earth" (as *The Herald* referred to it), that would become the site of New Zealand's steel industry.



MINE SITES

New Zealand Steel has long operated two sites where the critical iron sands are mined. Glenbrook itself is supplied by the Waikato North Head site (being developed, 1967, top) while at Taharoa, the sand is sent to an offshore ship as slurry, via the pipeline that began operations, as shown above, in February 1972.

STARTING UP THE MILL

Sir Woolf Fisher lights the kiln for the first time, 20th November, 1969 and Sir John Ingram turns on the power for the first heat in the steel plant, three days later. While technology and engineering expertise delivered a workable process, without the vision of so many people, there would be no New Zealand Steel.



THE ROYAL VISIT

Such was the status of the mill that an excited Waiuku had the opportunity to welcome the Duke of Edinburgh and the Prince of Wales in March 1970. While their Royal Highnesses were shown the finer points of turning iron sand into steel by mill staff, Sir John Ingram, Sir Woolf Fisher and a clearly startled onlooker took care of hosting the dignitaries.



LOCAL IMPACT

With the massive influx of workers, to the mill, from other New Zealand towns and overseas, a large demand for housing needed to be met, and quickly. The solution, the Hamilton Block, was built in the late 1960s. The image (left) taken in 1968 shows how separate it was from the Waiuku township as a whole.



Interested in seeing more of New Zealand Steel? We run hosted public tours on a regular basis.

For more information, email louise.sinclair@bluescope.com or call 09 375 8111

www.nzsteel.co.nz

50 YEARS
1965 - 2015

CELEBRATING 50 YEARS

1980s to 1990s

These two decades were a time of extremes for New Zealand Steel. There were great steps forward, not least in the form of the expansion project. But there were challenges, too. Ownership changes were the other main issue of the decade, as potential suitors lined up to buy the mill off the government. The company came under full BHP (now BlueScope) control in 1992.

The company remains very much a Kiwi entity – even the Australians will tell you that! Here are some images from those two decades, as we continue our commemoration of the company's incorporation in July, 1965.



EXPANSION CONSTRUCTION

To expand to a fully integrated mill, massive construction took place and new plant and machinery was brought in. **ABOVE LEFT:** shows the new MHF after-burner with a contractor in the off-take duct to waste heat boiler, 1986. **ABOVE RIGHT:** shows the construction of the steel plant as part of the Stage 1 expansion, mid 1984. **ABOVE:** offers a fish eye view of Expansion construction proceedings.

OWNER SHIP

Government ownership of the mill meant a steady stream of politicians visited Glenbrook. **LEFT:** John Ingram introduces Sir Robert Muldoon to Janet and Martin Hyde (iron plant manager) on the Prime Minister's visit to turn the first sod of the Stage 1 expansion, 1981. **RIGHT:** the very well-liked Lance Coburn had the distinction of being the first BHP CEO, arriving at Glenbrook in 1992.



NEW PRODUCTS

TOP LEFT: ColorSteel™, known as “the roof of New Zealand”, rolled off the new Paint Line in 1982, while New Zealand Steel Zincalume® was released to the market in 1994. **BOTTOM LEFT:** shows molten Zincalume® flowing in the launder from pre-melt pot to main pot in the galvanising line. **RIGHT:** This era saw the adoption of large new computer systems at the mill as shown by this shot of the Starship Enterprise-like old control room in the late 1980s.



OUR PEOPLE!

New Zealand Steel family Christmas parties are legendary, as this montage from the 1984 celebrations clearly shows. **FAR LEFT** and **LEFT** some smiley, happy kids during the Taharoa 10-year celebrations, 1983. **BOTTOM LEFT:** Trim, taut and terrific, the 1990 NZ Steel Dragonboat Team and **BOTTOM MIDDLE** the 1998 Top Plant winners both showing how much colleagues enjoy getting together outside of work time. **BOTTOM RIGHT:** In 1987, Dawn Hutson started Women of Steel, an initiative aimed at generating women-focused activities and discussion groups in a male-dominated environment. Here Dawn (centre) and her team pose for a photo opportunity in 1992.





CELEBRATING 50 YEARS

2000s to 2010s

Continuing our commemoration of New Zealand Steel's incorporation in July, 1965 we come to developments over the past 20 years. The early 2000s provided a reasonably temperate trading environment for steel the world over, however, reflecting the true cyclical nature of the industry, New Zealand Steel found itself weathering the challenges of the Global Financial Crisis (GFC) of the late 2000s, emerging to face a new set of challenges. Over the following five years or so the company worked with government to establish a responsible response to the Emissions Trading Scheme (ETS) remaining committed to being a large employer and an environmentally-friendly producer.

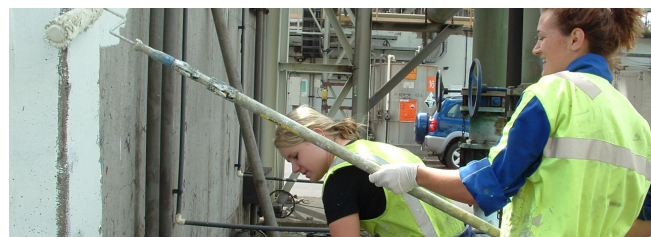


KEEPING IT GREEN

ABOVE The mill has always maintained a greenbelt around itself, with gardens and grounds regularly maintained, while **TOP LEFT** shows the marram grasses and pine forest that are part of the replanting at Waikato North Head and **TOP RIGHT** shows the conveyor belt transporting mined material to the operating plant.

OUR OWN BACKYARD

Both Cyril Benjamin and Bill Jacob engaged on "cleaning house" initiatives in and around the mill through the first decade of this century. Much paint was applied **TOP LEFT** trees planted **FAR LEFT** a reminder that even a steel mill can have a grand aesthetic **BOTTOM LEFT**.



AIR MILES



The mill has always attracted interest from a wide variety of sources. Here **TOP LEFT** Sir Richard Branson swaps notes with then NZ Steel CEO Simon Linge, October 2011 while Simon's predecessor, Bill Jacob **TOP RIGHT** hailed from the US and brought with him a community-centric "meet the people" attitude, earning him friends both outside and inside the mill. **BOTTOM RIGHT**: Bill Jacob presents an award to Franklin Mayor Mark Ball watched by Nicki Bowman, Des Morrison, (a future Franklin Councillor), and John Nuttall.



COMM UNITY!

New Zealand Steel has always been involved in the local and regional community, whether it's through sponsorship **TOP** as the Kariaotahi Surf Life Saving team shows at the 2005 Waiuku Christmas Parade. **BOTTOM**: There are always seemingly tireless volunteers ready to engage beyond the mill, as shown here by those dressing themselves, and their ponies, with Christmas frills, 2005.



YOU'RE WELCOME

The mill has a range of hosting activities. **TOP LEFT**: Here then BlueScope CEO Kirby Adams is treated to a traditional Maori welcome in 2001, while CEO Cyril Benjamin saucers a sausage **TOP RIGHT**, in another great Glenbrook tradition, the welcoming barbecue at the same event. A good cause is never far away, whether it's Canteen - **BOTTOM LEFT** Dr Norm Clark loses his beard for the cause, October 2004 or keeping the kids entertained **BOTTOM RIGHT**, as the M & Ms bring on the grins, Christmas of the same year.



Interested in seeing more of New Zealand Steel? We run hosted public tours on a regular basis.

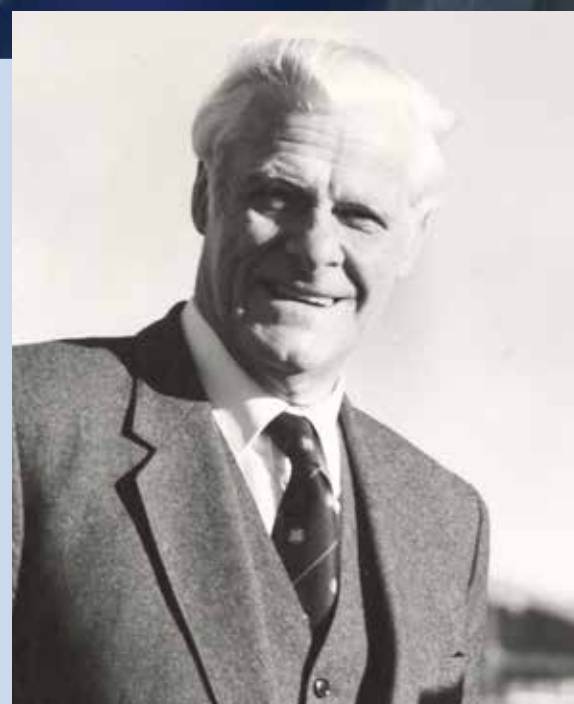
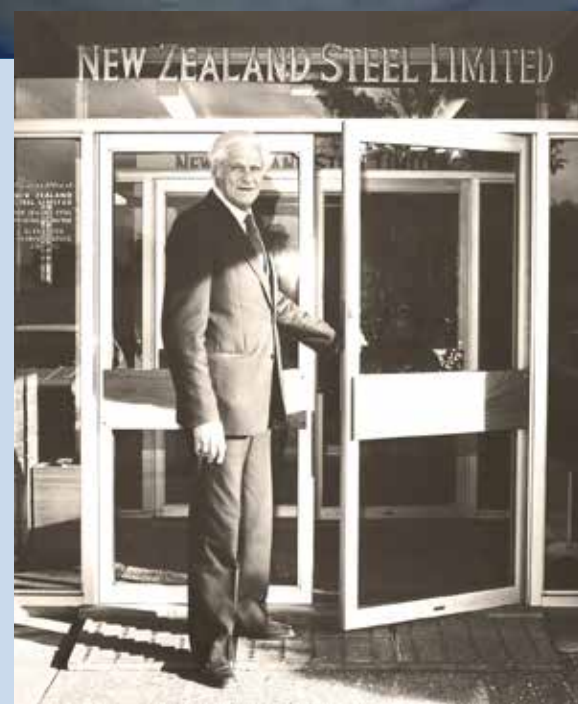
For more information, email louise.sinclair@bluescope.com or call 09 375 8111

www.nzsteel.co.nz

50 YEARS
1965 - 2015

CELEBRATING 50 YEARS

And so we come to the last of our four weeks tracing the New Zealand Steel story over the last fifty years. We hope it's provided a pictorial overview of some of the happenings in and around the mill while, for many of you, we've perhaps rekindled some fond memories. As we said at the outset, New Zealand Steel naturally has an important relationship with the local community, and recognises how much community interactions over the years have shaped the culture at Glenbrook. It's been a wonderful journey so far, as the pictures from our final commemorative week show.



**JOHN
INGRAM**

The man who shaped the mill? This humble man would never claim that. Indeed John Ingram constantly asserted that the original technology team of Nigel Evans, Peter Bates and Rick Cooper were the ones who ensured there'd be a New Zealand Steel at all. However, as Managing Director from 1969-1986, Sir John laid the foundation for the business to thrive and survive. He continued to be active in mill activities right up until his death earlier this year, as this picture of him at the 2005 Christmas staff picnic well attests. A giant of a man with a big heart, an affable nature and a quick mind, he will always be an integral part of the New Zealand Steel story.

TRUE GRIT

OUR 50 YEAR
HISTORY

As part of our 50 year commemorations, New Zealand Steel have put together a substantial book documenting our first half century. Covering both the technical advances in the mill and its processes, and the people and events that have shaped our history, True Grit, The Survival and Success of New Zealand Steel will be launched on September 9th. While commissioned for an internal company audience, there has been a lot of interest beyond the mill gates.

If you are interested in more information or, indeed, securing a copy, contact Vicki Woodley on 375 8111.



THE COMMUNITY

From its earliest days New Zealand Steel has recognised the importance of true community, and has, as a result supported a range of local initiatives. While it's worthwhile to provide support where it's most needed, one of the greatest outcomes is the coming together of Glenbrook staff and local people, working together for a good cause. Some of the more recent community-based activities include:

1. The biennial Karioitahi Beach clean-up
2. Te Whangai Trust - community-based social enterprise to provide work
3. Road Safety Education - here NZS personnel address students from Rosmini College
4. Trees for Survival and Glenbrook School

New Zealand Steel also contributes to vital lifesaving endeavours, such as:

5. Westpac Rescue Helicopter
6. Waiuku Search and Rescue

